



ENTRY INTO CLEANING SKILL SET

How would getting qualified make you feel?



COST

The Entry into Cleaning Skill Set is designed for students looking to ensure you can meet the requirements of the thriving cleaning and asset maintenance industry.

Fee for service	\$395
Skill Set Hours	Full-time
Duration	8 weeks

The course is designed to be accessible, flexible and to support an individuals learning style. This includes a combination of:



Interactive online eLearning



Full trainer support



Simulated workplace



JOB OPPORTUNITIES

- Domestic cleaner
- Housekeeper
- Commerical cleaner
- Industrial Cleaner



QUALIFY
EMPLOYMENT & TRAINING

Feel the difference.



NATIONALLY RECOGNISED
TRAINING



ENTRY INTO CLEANING SKILL SET

On successful completion, students will receive a Statement of Attainment. The Entry into Cleaning Skill Set contains the following units:

BSBWHS332X Apply infection prevention and control procedures to own work

This unit describes the skills and knowledge required to undertake work activities in compliance with organisational procedures that prevent and control infection.

CPPCLO3104 Clean high-touch surfaces

This unit specifies the skills and knowledge required to clean surfaces that are touched frequently, by the same or different people, in a range of domestic and commercial contexts.

These units have been selected from CPP30321 Certificate III in Cleaning Operations.

To make a job seeker referral

[CLICK HERE](#)

ENTRY REQUIREMENTS

Students will need the following to complete the courses successfully:

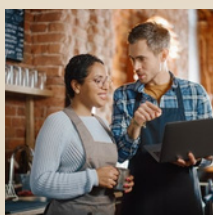
- An email address and access to a computer with internet connection
- Basic to intermediate computer literacy
- Complete a short language, literacy and numeracy test
- The ability to communicate and follow instructions verbally or written in English
- PDF reader software (eg Adobe Acrobat)
- Video conferencing software (eg Microsoft Teams)
- Obtain a unique student identifier (USI), for more information go to www.usi.gov.au

MORE WORKFORCE AUSTRALIA ACTIVITIES



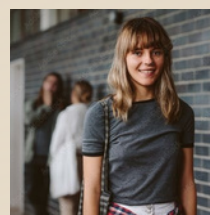
RETAIL SKILL SET

[MORE INFO](#)



CUSTOMER SERVICE

[MORE INFO](#)



WORKREADY

[MORE INFO](#)